

Intelligent LED Drivers for outdoor applications



Applied Power is the leader in switching power supply technology. Our advanced LED driver solutions enables our customers to develop the most innovative lighting products.

Our LED drivers have following features:

1. Super high efficiency
2. Intelligent dimming
3. Bluetooth or ZigBee communication
4. Very compact size
5. IP67 waterproof
6. High reliability and long life time



We are dedicated to provide the most competitive LED drivers to our customers. To achieve that, we are doing followings:

1. At design stage, we have very strict verification test, EMC test, burn-in test, heat analysis and test.
 2. At production, we use advanced equipment and process to improve production efficiency and quality. We also have leading system to track the materials for each product.
 3. Keep improving our supply chain management so that we can have the most competitive materials and on time delivery.
- Locate at Shanghai Free Trade Zone, China.
 - World class LED driver technology experts
 - Modern manufacturing facility
 - Professional management team
 - We are working toward the best high power LED driver supplier

Product overview-Common Input

<i>Series</i>	<i>Input</i>	<i>Output Voltage</i>	<i>Output Current</i>
<i>120W Series</i>	<i>90-305Vac</i>	<i>12-170V</i>	<i>0.84-5.0A</i>
<i>150W Series</i>	<i>90-305Vac</i>	<i>16-285V</i>	<i>0.63-7.5A</i>
<i>200W Series</i>	<i>90-305Vac</i>	<i>16-285V</i>	<i>0.84-10A</i>
<i>240W Series</i>	<i>90-305Vac</i>	<i>16-48V</i>	<i>6.0-12.0A</i>
<i>320W Series</i>	<i>108-305Vac</i>	<i>24-428V</i>	<i>0.7-8.88A</i>
<i>500W Series</i>	<i>108-305Vac</i>	<i>24-58.8V</i>	<i>8.5-14.0A</i>
<i>600W Series</i>	<i>108-305Vac</i>	<i>24-58.8V</i>	<i>10.2-16.7A</i>
<i>720W Series</i>	<i>108-305Vac</i>	<i>24-58.8V</i>	<i>12.2-20A</i>

Product overview-High Voltage Input

<i>Series</i>	<i>Input</i>	<i>Output Voltage</i>	<i>Output Current</i>
<i>640W Series</i>	<i>108-382Vac</i>	<i>18-54V</i>	<i>7.4-26.67A</i>
<i>720W Series</i>	<i>108-382Vac</i>	<i>18-54V</i>	<i>8.89-30.0A</i>
<i>600W Series</i>	<i>277-460Vac</i>	<i>18-54V</i>	<i>11.1-25.0A</i>
<i>720W Series</i>	<i>277-460Vac</i>	<i>18-54V</i>	<i>13.3-30.0A</i>
<i>600W Series</i>	<i>305-660Vac</i>	<i>36-54V</i>	<i>11.1-12.5A</i>
<i>800W Series</i>	<i>305-660Va</i>	<i>36-54V</i>	<i>14.8-16.6A</i>

*All above drivers are designed with
0-10V/PWM/Rset/Clock/DMX Dimming(upon request)*

Bluetooth or ZigBee communication is optional

120W Intelligent LED driver



- Constant Voltage and Constant Current
- Dimming Options
- IP67
- Up to 91% Efficiency
- Wide range input **90VAC~305VAC**
- -40°C to +90°C Operation (Case T)
- Light Weight
- 10 Years Life
- Bluetooth or Zigbee Optional
- 12V@20mA Auxiliary Output optional
- Dimensions:**227x49x40.5mm**

150W Intelligent LED driver



80° C Ambient
Operation Temp

- Constant Voltage and Constant Current
- Dimming Options
- IP67
- Up to 94.5% Efficiency
- Wide range input 90VAC~305VAC
- -40°C to +90°C Operation (Case T)
- Light Weight
- 10 Years Life
- Bluetooth or Zigbee Optional
- 12V@100mA Auxiliary Output optional
- Dimensions: 200x68x42.5mm

200W Intelligent LED driver



- Constant Voltage and Constant Current
- Dimming Options
- IP67
- Up to 94.5% Efficiency
- Wide range input **90VAC~305VAC**
- -40°C to +90°C Operation (Case T)
- Light Weight
- 10 Years Life
- Bluetooth or Zigbee Optional
- 12V@100mA Auxiliary Output optional
- Dimensions:**230x68x42.5mm**

240W Intelligent LED driver



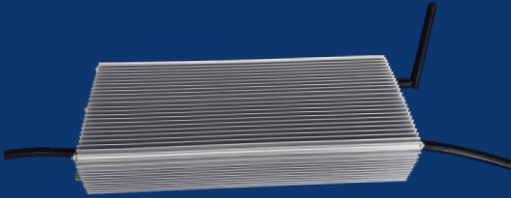
- Constant Voltage and Constant Current
- Dimming Options
- IP67
- Up to 92.5% Efficiency
- Wide range input **90VAC~305VAC**
- -40°C to +90°C Operation (Case T)
- Light Weight
- 10 Years Life
- Bluetooth or Zigbee Optional
- 12V@100mA Auxiliary Output optional
- Dimensions:**230x68x42.5mm**

320W Intelligent LED driver



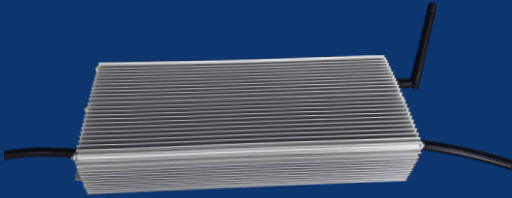
- Constant Voltage and Constant Current
- Dimming Options
- IP67
- Up to 94% Efficiency
- Wide range input **108VAC~305VAC**
- -40°C to +90°C Operation (Case T)
- Light Weight
- 10 Years Life
- Bluetooth or Zigbee Optional
- 12V@100mA Auxiliary Output optional
- Dimensions:**245x84x42.5mm**

500W Intelligent LED driver



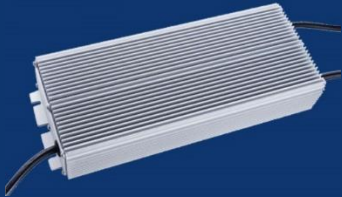
- Constant Voltage and Constant Current
- Dimming Options
- IP67
- Up to 95% Efficiency
- Wide range input **108VAC~305VAC**
- -40°C to +90°C Operation (Case T)
- Light Weight
- 10 Years Life
- Bluetooth or Zigbee Optional
- 12V@250mA Auxiliary Output optional
- Dimensions:**280x123x54mm**

600W Intelligent LED driver I



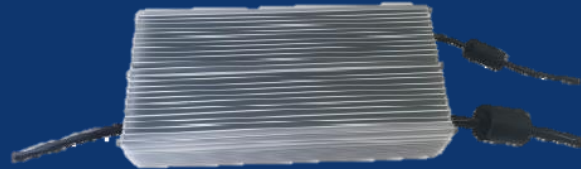
- Constant Voltage and Constant Current
- Dimming Options
- IP67
- Up to 95% Efficiency
- Wide range input **108VAC~305VAC**
- -40°C to +90°C Operation (Case T)
- Light Weight
- 10 Years Life
- Bluetooth or Zigbee Optional
- 12V@250mA Auxiliary Output optional
- Dimensions:**280x123x54mm**

600W Intelligent LED driver II



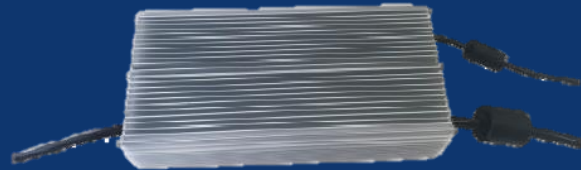
- Constant Voltage and Constant Current
- Dimming Options
- IP67
- Up to 96% Efficiency
- Wide range input **277VAC~460VAC**
- -40°C to +90°C Operation (Case T)
- Light Weight
- 10 Years Life
- Bluetooth or Zigbee Optional
- 12V@250mA Auxiliary Output optional
- Dimensions:**250x123x54mm**

600W Intelligent LED driver III



- Constant Voltage and Constant Current
- Dimming Options
- IP67
- Up to 94.5% Efficiency
- Wide range input **305VAC~660VAC**
- -40°C to +90°C Operation (Case T)
- Light Weight
- 10 Years Life
- Bluetooth or Zigbee Optional
- 12V@250mA Auxiliary Output optional
- Dimensions:**294x123x54mm**

640W Intelligent LED driver



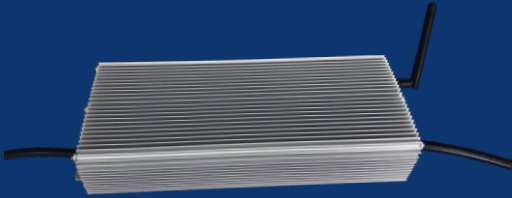
*Very
Compact*

- Constant Voltage and Constant Current
- Dimming Options
- IP67
- Up to 97% Efficiency
- Wide range input 108VAC~382VAC
- -40°C to +90°C Operation (Case T)
- Light Weight
- 10 Years Life
- Bluetooth or Zigbee Optional
- 12V@250mA Auxiliary Output optional
- Dimensions: 240x123x54mm

Note: 640W@240-382Vac, derating at lower input voltage, please contact us for details

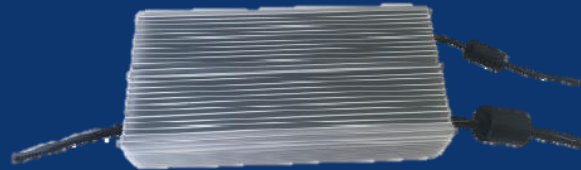
www.appliedpsu.com

720W Intelligent LED driver I



- Constant Voltage and Constant Current
- Dimming Options
- IP67
- Up to 95% Efficiency
- Wide range input **108VAC~305VAC**
- -40°C to +90°C Operation (Case T)
- Light Weight
- 10 Years Life
- Bluetooth or Zigbee Optional
- 12V@250mA Auxiliary Output optional
- Dimensions:**280x123x54mm**

720W Intelligent LED driver II



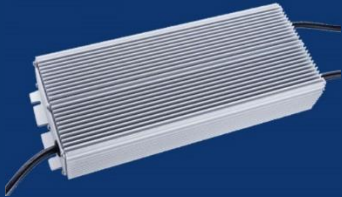
*Very
Compact*

- Constant Voltage and Constant Current
- Dimming Options
- IP67
- Up to 97% Efficiency
- Wide range input 108VAC~382VAC
- -40°C to +90°C Operation (Case T)
- Light Weight
- 10 Years Life
- Bluetooth or Zigbee Optional
- 12V@250mA Auxiliary Output optional
- Dimensions:260x123x54mm

Note:720W@240-382Vac, derating at lower input voltage, please contact us for details

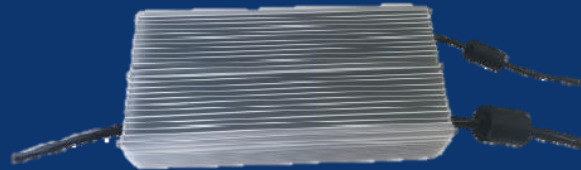
www.appliedpsu.com

720W Intelligent LED driver III



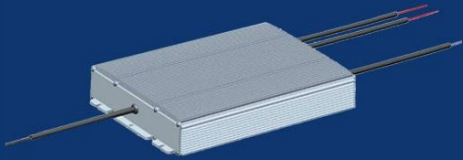
- Constant Voltage and Constant Current
- Dimming Options
- IP67
- Up to 96% Efficiency
- Wide range input **277VAC~460VAC**
- -40°C to +90°C Operation (Case T)
- Light Weight
- 10 Years Life
- Bluetooth or Zigbee Optional
- 12V@250mA Auxiliary Output optional
- Dimensions:**260x123x54mm**

800W Intelligent LED driver



- Constant Voltage and Constant Current
- Dimming Options
- IP67
- Up to 94.5% Efficiency
- Wide range input **305VAC~660VAC**
- -40°C to +90°C Operation (Case T)
- Light Weight
- 10 Years Life
- Bluetooth or Zigbee Optional
- 12V@250mA Auxiliary Output optional
- Dimensions:**310x123x54mm**

1200W Above Intelligent LED driver



*In development
Not released yet*

- Constant Voltage and Constant Current
- Dimming Options
- IP67
- Up to 97% Efficiency
- Low Standby < 0.5W
- Wide range input 108VAC~305VAC
- -40°C to +90°C Operation, up to +50°C without derating
- Compact size
- 10 Years Life
- Optional Bluetooth Communication

www.appliedpsu.com

**For more information, please
contact us:**

sales@appliedpsu.com

Thank You